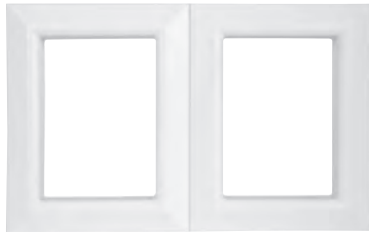
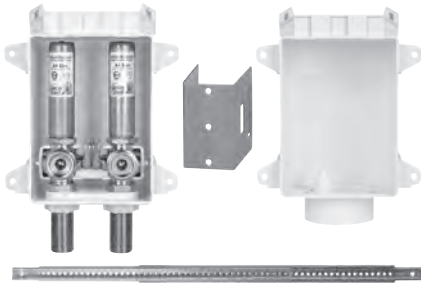
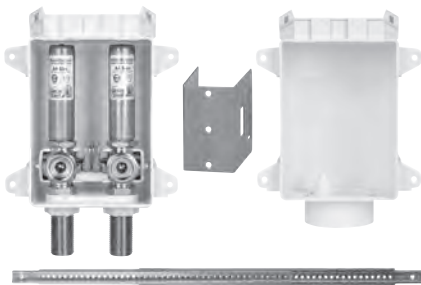


Standard Pack



696-2313MF

Rough-in Pack



Order frames 696-2313MR separately.

Display Box



696-2313MFPK4

Ox Box™

Washing Machine Outlet Box with Mini-Rester™ Water Hammer Arresters

Patent #7,360,553 & #7,735,511

- Boxes mount securely to stud or over studs
- Separates supply and drainage systems into two stud bays
- Separate boxes offer flexible layout
- Durable ABS stands up to job site abuse
- Drain knockout is easy to remove with pliers
- With two Mini-Rester water hammer arresters
- Debris covers included to protect boxes from drywall mud and paint
- High-quality quarter-turn ball valves
- 3/4" male hose-thread outlet connections



The debris cover protects valves from drywall mud and paint during construction.

Related Products
Frames for Rough-in Packs

p 254

Item No	Shank Connection	NO LEAD	Pkg	Min Qty	Case Qty
STANDARD PACK					
696-2313MF	1/2" female sweat		B*	10	10
696-2313CF	1/2" CPVC male		B*	10	10
696-2313XF	1/2" PEX F1807		B*	10	10
696-2313WF	1/2" PEX F1960		B*	10	10
696-2313AF	1/2" PEX F2080		B*	10	10
696-2313VF	1/2" Viega PEX Press		B*	10	10
696-G2313MF	1/2" female sweat, no lead	✓	B*	10	10
696-G2313CF	1/2" CPVC male, no lead	✓	B*	10	10
696-G2313XF	1/2" PEX F1807, no lead	✓	B*	10	10
696-G2313WF	1/2" PEX F1960, no lead	✓	B*	10	10
ROUGH-IN PACK					
696-2313MR	1/2" female sweat		B*	10	10
696-2313CR	1/2" CPVC male		B*	10	10
696-2313XR	1/2" PEX F1807		B*	10	10
696-2313WR	1/2" PEX F1960		B*	10	10
696-2313AR	1/2" PEX F2080		B*	10	10
696-G2313CR	1/2" CPVC male		B*	10	10
ROUGH-IN PACK WITH 26" BAR					
696-2313MR26	1/2" female sweat		B*	10	10
696-2313CR26	1/2" CPVC male		B*	10	10
696-2313XR26	1/2" PEX F1807		B*	10	10
STANDARD PACK BAR-CODED IN DISPLAY BOX					
696-2313MFPK4	1/2" female sweat		B*	4	4
696-2313CFPK4	1/2" CPVC male		B*	4	4
696-2313XFPK4	1/2" PEX F1807		B*	4	4
696-G2313MFPK4	1/2" female sweat, no lead	✓	B*	4	4
696-G2313CFPK4	1/2" CPVC male, no lead	✓	B*	4	4
696-G2313XFPK4	1/2" PEX F1807, no lead	✓	B*	4	4

